

Dear Parents/Carers,

October 2019

As we approach October half term, I thought it was worth sending a brief newsletter to give you a few updates.

If you follow us on **twitter** you will have seen the great variety of experiences the children have had from Pre-School right through to Y6 this half term. It continues to be a great way of sharing a little of what happens in school on a daily basis. Y5 and Y6 have completed two successful residential visits – we'll be sorting the letters for next year very soon to allow parents of children currently in Y4 and Y5 almost a year to pay for the visit.

We now have 71.2% of parents who have the **Schoolcomms app**. The percentage is slowly growing and our aim is 100% as then the school is not having to pay any additional cost to text parents. We're gradually using Schoolcomms for payments too and again, our aim is for the majority of educational visits to be payable this way, as well as school dinners. For smaller amounts such as Non-School Uniform Days we will not offer a payment online option as, although this system is very convenient, it does come at a cost for the school for every payment and so we think it's not good value for this.

If you've not downloaded the app yet, please do as soon as possible. Thank you to the parents who have had difficulty with this but have persisted and have come to the office to clarify information. It is sometimes just an email address which is not right and once this is resolved it's possible to use the app.

As you will be aware, with this system we also have the capacity to email letters – for example we did this with the Flu Immunisation letter. We will try to do this more and more – particularly with letters which give information – e.g. with this newsletter. Eventually it will be our aim to send all letters only by email.

Please read on for further updates and reminders.

Kay Hemmings (Head Teacher)



Top Gate

Over the summer an additional gate was installed at the pedestrian entrance. This was to ease congestion when parents are entering and leaving at the beginning and end of the day. Feedback has indicated that it is working well at the start of the day but there is still congestion at the end of the day. Can I therefore make two requests:



1) When Mr Barclay (Caretaker) opens the gate at about 3 p.m. could you please stand well back until he has opened both gates. Recently it has been difficult for him to open the second gate as parents have been coming through before he has had chance to do this.

2) Parents waiting for Upper School children please stand at the wooden fence – **not** against the wall of the Activity Den – to allow space for Lower School parents and children to leave safely. If a pathway can be left clear this will make things so much easier and safer for all concerned. Thank you.



We now have 438 followers on twitter. If you are not one of them then you are missing out on weekly updates and activities in school – to follow us we are @TanfieldPrimary It's easy to download and takes only seconds to check each day on what has been happening in school. I'm sure you won't regret it.



<https://parentzone.org.uk/advice/parent-guides>

If you are ever unsure about websites your child is accessing then this website could be a useful reference point for you. It gives you information about online games, social media and a lot more. Their mission is to improve outcomes for children in a digital world so:

Children will be safer online.

Children will be resilient enough to cope with the challenges of the online world.

Children will be educated for a digital future.



We are also putting weekly information leaflets on twitter from National Online Safety. It gives you top tips on keeping your child safe on the internet. Last week was 'What parents need to know about Instagram'. The week before was 'Social Media and Mental Health'. They are useful and very informative. Please find time to read these.

Don't forget – if you are clearing any toys, games etc. out prior to Christmas, if you have any that you think may be useful for OPAL, please let us know and bring them in.

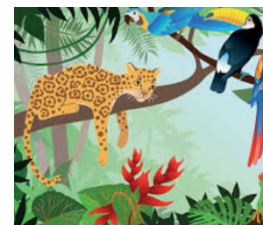


Art Exhibition – The Amazon Rainforest

Last year we had our first Art Exhibition. It was such a success we have decided to make it an annual event. This year, if your children haven't already told you, you'll have seen on twitter that they have been very busy learning about the Amazon Rainforest. We chose this theme due to the importance of the rainforest to our world and the global concern regarding the recent fires within the rainforest. Following research, the children will be celebrating the wonders of the forest through their art work.

The exhibition is on Thursday 24th October.

You are invited to come and enjoy their art work from 2 p.m. The Friends of Tanfield Lea have kindly agreed to serve refreshments too. The children will remain in class as there will not be enough room for everyone in the hall and they will get the opportunity to view the exhibition with their class. If you can't come for 2 p.m. then you will be welcome to come and look round at the end of the school day with your child.



Attendance

Up to 18th October our attendance for this academic year was 96.77%. You can see the break down below. 96% is the expected % attendance for all children so we have made a good start to this year. Leave of Absence accounts for some of the absence. Please refrain from requesting absence during term time.

Don't forget, May Bank Holiday is Friday 8th May this year (not Monday 4th May) and the children are off for 3 additional days in May (20th, 21st and 22nd May) which are Teacher Training Days. We have arranged it this way for a few years now as booking holidays at this time can be cheaper and does not impact on attendance. We monitor attendance on a half termly basis and where attendance drops below 95%, parents will be contacted, generally by a letter, to inform them of this. If the attendance continues to be of concern then a meeting may be arranged or further action taken.



Session Attendance Summary (03 Sep 2019 - 18 Oct 2019) for Attendance

	Year R	Year 1	Year 2	Year 3	Year 4	Year 5	Year 6	All Years
All	96.22%	96.49%	96.96%	96.45%	96.39%	97.47%	97.63%	96.77%

Parent Governor Vacancy

We have a vacancy for a Parent Governor on our Governing Body. The role of a school governor is to contribute to the work of the full governing body in ensuring high standards of achievement for all children in the school by:

- Setting the school's vision, ethos and strategic direction;
- Holding the Head Teacher to account for the educational performance of the school and its children; and
- Overseeing the financial performance of the school and making sure its money is well spent

School governors provide strategic leadership and accountability in schools. They appoint the Head Teacher and Deputy Head Teacher and hold the responsibility for finance in schools, working with the Head Teacher to make the tough decisions about balancing resources.

Each individual governor is a member of the governing body and some sub committees. Decisions are the joint responsibility of the governing body.

The role of the governing body is a strategic one, its key functions are to:

- Set the aims and objectives for the school
- Set the policies for achieving those aims and objectives
- Set the targets for achieving those aims and objectives
- Monitor and evaluate the progress the school is making towards the achievement of its aims and objectives
- Be a source of challenge and support to the head teacher (a critical friend)

The commitment to this role would include attendance at the Full Governing Body Meeting once a term, attendance at at least one subcommittee meeting once a term for either the Achievement and Data, Teaching and Learning or Health and Safety and Safeguarding Groups in addition to attending Personnel or Finance meetings.

Please speak to one of our current parent governors – Mrs Burnett (Y6), Mr Jagger (Y2/Y4), Mr Gladstone-Heighton (Rec) – about the rewards and responsibilities of this role.

If you think you would like to put yourself forward for this role then please pick up an advert and nomination form from the office. **Applications should be made by Friday 8th November 2019.**

Preschool Places

Looking forward to next year, if you – or any of your friends or family members - have a child who has just turned 3 years old or will do so before the end of August, then you are eligible to apply for a Pre-School place from September 2020. If you have not submitted an application yet, please request a form from the office and return it as soon as possible as we will be confirming places at the end of May.

School Data Summary

All schools have performance data for the end of each Key Stage. We publish this data on our website and the 2019 data is already accessible there. In the meantime I thought you would be interested in seeing a summary here. The four national data collection points are the end of Reception, Y1 Phonics, the end of KS1 and the end of KS2.

Our school data is compared with the national data as well as evidence of the progress made from end of Reception to KS1 and then progress from KS1 to KS2.

As a whole cohort (group), our children generally come in to school at a standard below the national average. By the time they leave us at the end of Key Stage 2 the cohort are at or, in some cases, above the national average which indicates good progress. The data below shows attainment (what the children achieved) at the key points in the primary school year. What it doesn't show is the progress made from starting points.

Data for 2019 is as follows:-

End of Reception – 74% of our children made a Good Level of Development. National was 72% so this cohort is attaining just above the National. Previous years we have been below this but every cohort is different.

Phonics Test - 84% of our Y1 children reached the required standard (National was 82%)

End of Key Stage 1

May 2019 % A.R.E. (expected)	School % @ ARE	National ARE	School % Working at Greater Depth	National % Working at Greater Depth
Reading	71%	75%	23%	25%
Writing	67%	69%	19%	15%
Maths	69%	76%	23%	22%

End of Key Stage 2

2019 (national in brackets)

% A.R.E. (expected)	Reading	Writing	Maths	GPS
All 35 children	86% (73%)	80% (79%)	83% (79%)	86% (78%)
% Higher (Greater Depth)				
All 35 children	31% (27%)	20% (20%)	26% (27%)	31% (36%)

Reading, Writing and Maths Combined at the end of KS2

In 2019, 71% of children achieved the expected standard in all three of Reading, Writing and Maths. This is above the National figure of 65%.

17% of children achieved a high score (a scaled score of 110+) in all three of Reading, Writing and Maths. This is above the National figure of 11%

Praise and Recognition

In our last newsletter we described the changes we have made to our Success Cards including the addition of postcards being sent home to parents. We wanted to explain some of the other ways we praise and recognise the achievements children have made. We believe in intrinsic motivation – that is wanting to do well for yourself, self-motivation - not because you will be awarded something. This is the underlying principle of all that we do.



Meet and Greet

All staff greet their children on entry to the classroom every day, shaking their hand and greeting them verbally. This gives a very positive start to the day and children have stated that it makes them feel valued and gives them an opportunity to speak to the teacher directly at the start of the day.

Team Points and Stickers

We do give children stickers as many like to receive these in recognition of their effort or achievement. Team points are also awarded in all year groups except Pre-School and Reception. Children are in one of four teams – Ruby, Sapphire, Emerald or Topaz. The children compete in these teams at various points during the year, including Sports Day, as well as receiving team points for achievements during the week. The points are totalled up by the Team Captains on a weekly basis and a winning team is awarded the Team Trophy at the end of each half term.

Attendance

Children's attendance is rewarded in the following ways:-

Every term

- Badge for those children who have achieved 100% attendance
- Sticker for those children who have achieved 98% attendance and above

Every half term

A group of children who are at risk of being classed as persistently absent become a focus group. They meet every week with Mr Mansfield and receive a token if they have 100% attendance in that week. At the end of the half term for

every token they have their name goes into a random name picker (i.e. 6 tokens, their names goes in 6 times). If they are chosen then they are invited to visit Waterstones to choose a book for the library which matches their reading ability. They read it themselves and then recommend it to a friend.

Star/Pupil of the Week

Some classes do this, others do not. It is a personal choice of the teacher. If they do not do this then teachers will use this time to celebrate Success Card stamps during that week.

KS2 Computer Suite Passes

Computer Passes (2 per class) are awarded to a class member if they have worked particularly hard that morning – they then get to choose a friend to join them in the Computer Suite over lunchtime.

Banners

These are awarded on a weekly basis in the Recognition Assembly on a Friday.

They are: Best Behaved Class at Lunchtime (all classes could win this), Best Attending Class (this is the class with the highest % attendance that week), Best at Moving Around School, Smartest Class (we judge this on how tidy the children's porches are).

Privilege Time and Loss of Privilege Time

All children in KS1 and KS2 are given Privilege Time (P.T.) at the end of the week – 2:30 until 3:05. Children begin the week with all of their Privilege Time. If they make an inappropriate choice during the week, they will be given a warning. If they do not respond positively or do something that is clearly defiant or hurtful to others, they lose Privilege Time. They can sometimes earn this back otherwise they spend however long they have lost in Loss of P.T. before joining the activities.

Children who lose no P.T. at all during the half term are invited to a mini celebration event – KS2 have hot chocolate and KS1 have a biscuit. It recognises this consistently good behaviour.

This varied combination of praise and recognition is appreciated by the children along with their own intrinsic motivation to do their best for themselves.



Tanfield Lea Toddler Group

Our local Toddler Group meet on Wednesday mornings – 9:30 until 11 a.m. (term time only) at our local Community Centre in Tanfield Lea. It is £1.50 per child and includes a snack and a drink. Parents, Grandparents and Carers are all welcome.

School Food – Packed Lunches brought in from home

To grow and stay healthy children need to eat a nutritionally well-balanced diet. Schools are an influential setting and can contribute significantly to improving the health and well-being of pupils.

Good nutrition in childhood can help to prevent a variety of health problems, both in the short term and later in life. There is increasing concern that many children are consuming too much fat, sugar and salt and too little fibre, fruit and vegetables.

Packed lunches can contribute to almost a third of a child's weekly food intake and therefore need to be balanced and nutritious. Our aim is to ensure that packed lunches brought in from home reflect the standards for school meals. We therefore state certain requirements if children bring a packed lunch in from home.

Ideally children's packed lunches should be based on the 'Eatwell Guide' model which shows items in the 5 main food groups; (Food Standards Agency).



Bread, Rice, Potatoes, Pasta

These starchy foods are a healthy source of energy. Packed lunches should include 2 or more portions.

Fruit and Vegetables

These foods provide vitamins, minerals and fibre. Lunches should include at least 1 portion of fruit and 1 portion of vegetables / salad, or more.

Milk and Dairy foods

These foods provide calcium for healthy bones and teeth. Include 1 portion at lunch.

Meat, Fish, Eggs, Beans

These foods provide protein for growth. Packed lunches should include 1 portion of these foods.

Foods and drinks high in fat and / or sugar

It is important not to fill up on too many foods that are high in fat and / or sugar at the expense of other more nutritious foods. Limiting high fat and sugar foods will help protect young people from becoming overweight as well as helping prevent tooth decay, heart disease, stroke, and diabetes.



To ensure consistency and to keep packed lunches in line with food standards for school meals, packed lunches should not contain the following:

- Fizzy / sugary drinks in cartons, bottles or cans
- Chocolate-coated products / sweets / confectionary
- Cereal bars, fruit bars high in salt, sugar or fat
- Chocolate spread as a filling for sandwiches
- Chewing gum
- Sugared / toffee and salted popcorn
- Crisps or any packet savoury snacks high in salt and fat
- Salted nuts

Please support your school by not including these items in a packed lunch. If your child does bring such items into school they will be told not to eat them and will be asked to take them back home with them.

Drinks – any drinks provided in lunch boxes **should only** include either plain water, milk (semi-skimmed), unsweetened fresh fruit juice, diluted fresh fruit juice/diluted low sugar drink, fruit or dairy based smoothies.

Monitoring and Evaluation

The school will carry out monitoring of packed lunch provision - where there may be concerns over a child's food / nutrition intake and / or content of packed lunches, this will be dealt with sensitively. If the concern continues, we will contact parents.

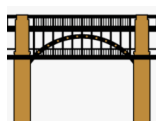


Remembrance Day Service

For the first time Tanfield Lea Partnership are going to be holding a Remembrance Service in the grounds of Tanfield Lea Club on Sunday 10th November at 1 p.m. They have asked if some of our children would like to volunteer to attend the service and read out the names of some of our local community who have lost their lives not only in the two world wars but in conflicts that are continuing to this day. Following this they will be invited to attend a buffet. A letter will go out this week to those children who are interested in this. Please return the form by the end of the week if you are happy for your child to take part. They will need an adult to attend the event with them.

Friends of Tanfield Lea

If you are interested in supporting our school through fundraising then you may be interested in the Friends of Tanfield Lea. They meet at least once a term (more when planning for specific events) and raise money to enhance what we can offer our children. If you would like to know more, please come to the office and ask to speak to Mrs Ovington. Their next meeting is January 15th at 3:30pm but they will be meeting prior to the Christmas Fair to plan their support for this event.



Finally – for parents of children in Y5 and Y6 your chance to come in and be creative with your child 😊

As part of Year 5 and 6's work on local inventors and the bridges of Newcastle, we would like to invite parents, carers or grandparents of Year 5 and 6 children to come into school on **Tuesday 5th November** from 1.15pm to help to build your child's bridge design. Your child will be given more details in school, but for now, please keep any spare cardboard, egg boxes and cardboard tubes ready for the activity!



The following page lists most of the main events in school up until Christmas. It's important that you keep a copy so that you can keep up to date with what is happening in school. You can find the dates for the rest of the year on the September newsletter, which is on the school website.

Dates for your Diary		Autumn 2019
Thursday 24th Oct	Children's Art Exhibition – 2 p.m. onwards – Art Exhibition in Lower School Hall	
Thursday 24th Oct	5:30 until 7:30 p.m. Halloween Disco at Tanfield Lea Club – organised by the Friends of Tanfield Lea. There are still some tickets available.	
Friday 25th Oct	Y5 and Y6 to visit the Discovery Museum in Newcastle	

HALF TERM	Monday 28th Oct to Friday 1st Nov
Monday 4th Nov	Back to School
Tuesday 5th Nov	Bridge Building in Y5 and Y6 – If you have a little spare time, please join us at 1:15 p.m.
Weds 6th Nov	Parent Meetings – 3:15 until 5:30
Thurs 7th Nov	Parent Meetings – 3:15 until 5:30
Friday 8th Nov	Non School Uniform Day – please send in a donation for school fund (1 per family) CNS Disability Morning – Children involved in activities all morning
Thursday 14th Nov	Nasal Flu Immunisation for all year groups from Reception to Y6 to take place today You must have registered with the NHS to ensure your child receives this.
Friday 15th Nov	Fundraising Event organised by the School Council (more details later)
Wednesday 20th Nov	Full Governing Body Meeting
Wednesday 20th Nov	Stay and Play Session for Reception from 1:10 p.m. today – Maths focus this time
Thursday 21st Nov	Stay and Play session for Reception – a.m. 8:55 until about 11 OR 1:10 until 3:10. Maths focus.
Friday 22nd Nov	INSET DAY – no children in school today as it is a staff training day.
Wednesday 27th Nov	Pre-School Stay and Play – a.m. and p.m.
Monday 2nd Dec	Y6 to attend Safety Carousel in Newton Aycliffe
Friday 6th Dec	Non School Uniform Day – FREE DAY as we'll be asking for cakes in 2 weeks
Sunday 8th Dec 5:30	Choir to sing at Ecumenical Carol Service – Tanfield Club (TBC)
Week Beg 9th Dec	Enterprise Week for Christmas Fair – all children to take part in this project in classes; planning and making things to sell at the Fair
Monday 9th Dec	Christmas Performance by Early Years (Pre-School and Reception) for all parents – 9.15
Tuesday 10th Dec	Y5 Multi Skills Festival @ Tanfield
Wednesday 11th Dec	Lego Robotics League Tournament – Group of Y5/6 to compete in this Year 1 and Year 2 Nativity Performance for Parents - 9.30 a.m. Christmas Dinner ALL CHILDREN TO COME DRESSED IN THEIR CHRISTMAS JUMPER TODAY or other Christmas clothing. Pre School Bumblebee and Ladybird children are invited to join us for this special lunch today. (Caterpillars will already be staying)
Thursday 12th Dec	Christmas Performance by Early Years (Pre-School and Reception) for parents – 9.15 a.m. Year 1 and Year 2 Nativity Performance for parents – 1.30 p.m. Germany Visit to Tübingen Christmas Market – Group of Y5/6 to attend this visit (Thursday 12th December to Sunday 15th December).
Friday 13th Dec	Y1/2 Hockey Competition, Dance/Gym (KS2) and ABCs meeting @ Tanfield
Sat/Sunday 14/15th	Visit to Tübingen – children return on Sunday night
Monday 16th Dec	Y5 and Y6 Party – 1 pm until 3.15 pm in Upper School Hall
Tuesday 17th Dec	Santa to visit children in Lower School a.m. - if he can fit us into his busy schedule. The Pre School Ladybirds are invited to join us from 9 until 10 Y1 and Y2 Party 1 until 3.05 Y3 and Y4 Party 1 until 3.15pm
Wednesday 18th Dec	Extra Non School Uniform Day - Children to dress up on a Christmas theme – please bring cake in for cake stall All children involved in Carol Service to go to church for a rehearsal this morning Early Years Parties today (Pre-School a.m. and Reception p.m.) <i>Ladybirds need to be in school in the morning today and not the afternoon (just for today)</i> Christmas Fair – 3.15pm until 4.30pm in Upper School All children to finish school at 3.00pm today to allow Fair to start at 3.15pm.
Thursday 19th Dec	Northern Stage Production 'The Snow Queen' – Y1 to Y6 to attend a.m. Big Foot Theatre Production for Pre-School and Rec in school this afternoon 'The Littlest Christmas Elf' – 1:30 until 2:15
Friday 20th Dec	FAMILY CAROL SERVICE – a.m. for all children and parents at St. Margaret's Church, Tanfield Village. Children able to go home following this. Pre-School Transition for new starters – January 2020
CHRISTMAS HOLIDAYS	Monday 23rd Dec to Friday 3rd January
Monday 6th January	Back to School